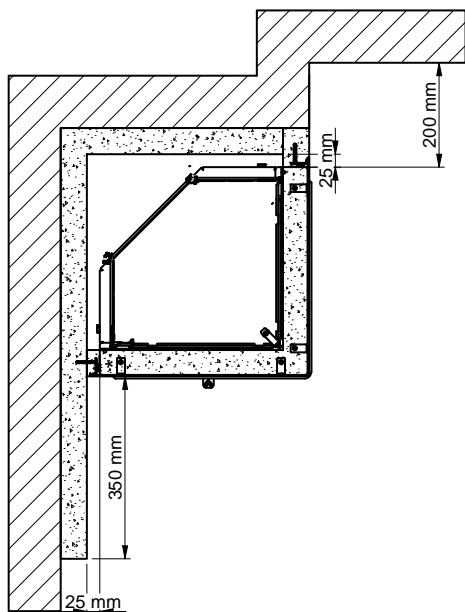
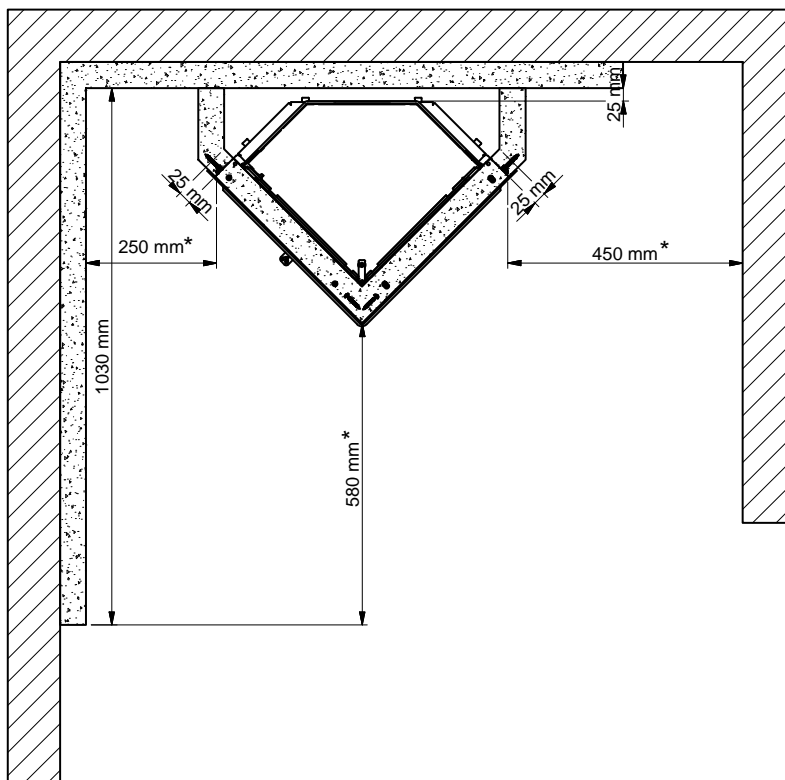

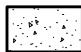


45° corner installation



Parallel installation



-  Flammable material
-  Fire wall, e.g. 50 mm Jøtul Firewall, 110 mm brick or other material with corresponding fireproof and insulating abilities

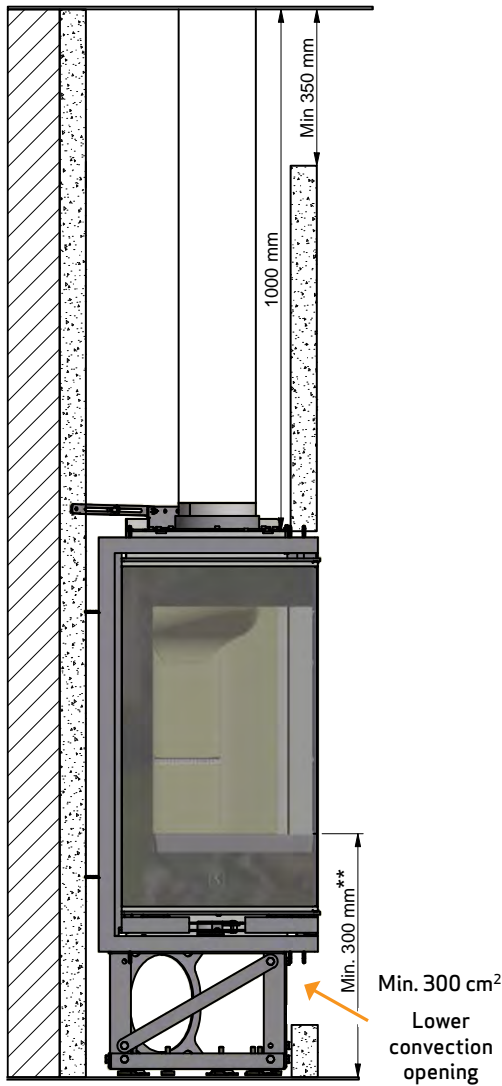
All distances are in mm.

All distances are minimum distances

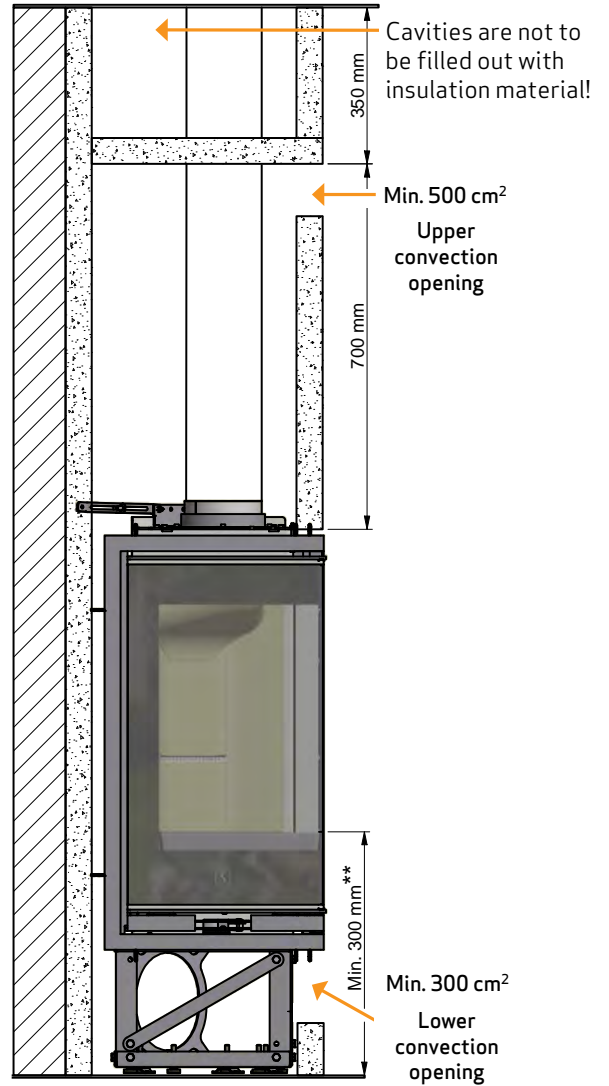
Distance to furniture: 800 mm. from glass

* Distance to glass

Installation with an insulated, vertical flue pipe
- open structure/surround

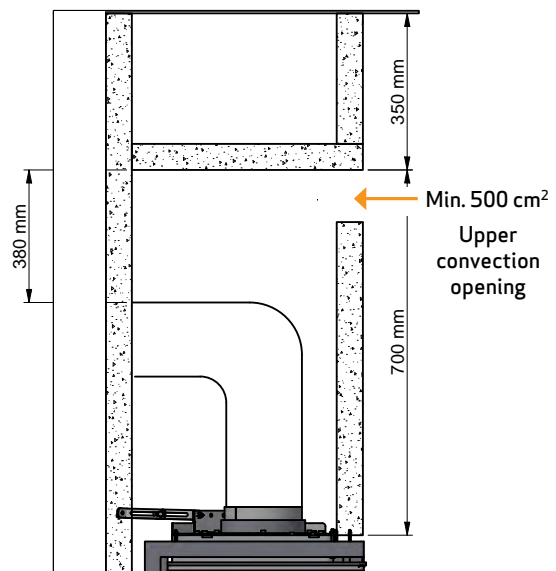



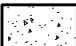
Installation with an insulated, vertical flue pipe
- structure/surround to ceiling



The distance to fire wall (brick) depends on the use of an insulated flue pipe all the way down to the insert

Installation with an un-insulated elbow pipe



-  Flammable material
-  Fire wall, e.g. 50 mm Jøtul Firewall, 110 mm brick or other material with corresponding fireproof and insulating abilities

All distances are in mm.

All distances are minimum distances

Distance to furniture: 800 mm. from glass

** Distance to flammable floor